



FP0186

FITTING INSTRUCTIONS FOR FP0186 FORK PROTECTORS
HUSQVARNA 701 ENDURO 2016-

Page | 1



THE ABOVE PICTURES ARE REPRESENTATIVE ONLY

THIS KIT CONTAINS THE ITEMS PICTURED AND LABELLED BELOW.
DO NOT PROCEED UNTIL YOU ARE SURE ALL PARTS ARE PRESENT.

Please note that the way the kit is packed does not necessarily represent the way of mounting to the bike

Please note that in cases where kits are packed with a plastic tube separating components on the spindle bar (this tube should be discarded).

THE PARTS SHOWN MAY BE REPRESENTATIVE ONLY (FOR CLARITY OF INSTRUCTIONS ONLY)

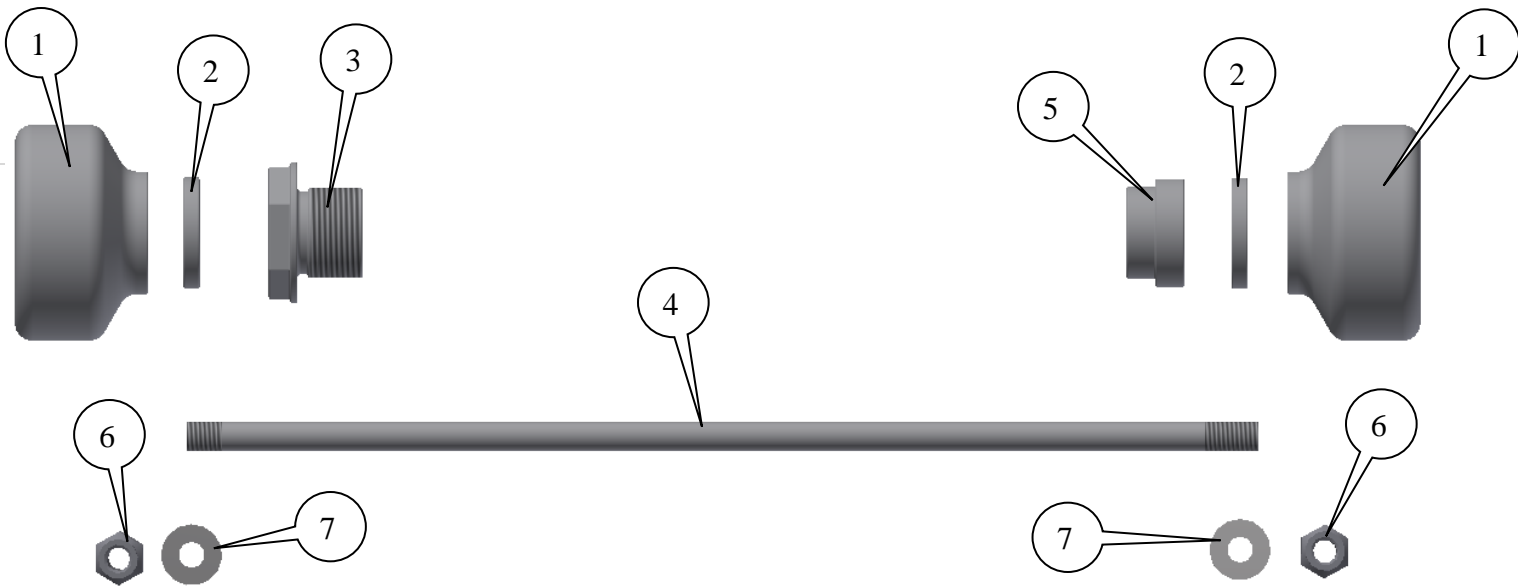
Digital copies of these instructions are available to download from www.rg-racing.com

GENERAL TORQUE SETTINGS

M4 BOLT = 8Nm
M5 BOLT = 12Nm
M6 BOLT = 15Nm
M8 BOLT = 20Nm
M10 BOLT = 40Nm



FP0186



LEGEND

- ITEM 1 = CRASH PROTECTORS (L & R-H-S) (B0461/CS304) (x2).
- ITEM 2 = SPACERS (L & R-H-S) (S0547 – 4.5mm WIDE) (x2).
- ITEM 3 = SPINDLE NUT (L-H-S) (H0004) (x1).
- ITEM 4 = SPINDLE BAR (SB0008 – 297.5mm LONG) (x1).
- ITEM 5 = SPACER (R-H-S) (S0494 – 16mm WIDE) (x2).
- ITEM 6 = M8 NYLOC NUTS (x2).
- ITEM 7 = M8 WASHERS (x2).

TOOLS REQUIRED

- Socket set to include 1x 10mm, 2x 13mm and 1x 27mm sockets and wrenches.

FITTING INSTRUCTIONS

- Remove the original spindle nut using 27mm A/F socket and wrench.
- Using 10mm socket remove plastic dust seal which is installed deeper into spindle.
- Loosen the two spindle clamping bolts arrowed below on the right hand side and remove the cap/dummy nut.



R&G Racing

Unit 1, Shelley's Lane, East Worldham, Alton, Hampshire, GU34 3AQ

Tel: +44 (0)1420 89007 Fax: +44 (0)1420 87301 www.rg-racing.com Email: info@rg-racing.com



- Replace left-hand spindle nut with new one (item 3) supplied in kit and tighten to manufacturers recommended torque.
- Fit one nut and washer (items 6 and 7) on spindle-bar (item 4) (the end with shortest thread), please ensure the nut is fully engaged.
- Feed spindle-bar with nut and washer through either crash protector (item 1), then through one of the thinner spacers (item 2) and into spindle nut just fitted so the counter bore in the crash protector locates over hex head of new spindle nut.
- Place the larger spacer (item 5) over the exposed right hand end of spindle-bar so it locates into the counter bore.
- Place the remaining thin spacer (item 2) over exposed right hand end of spindle-bar so it sits against the spacer just fitted.
- Place the remaining crash protector (item 1) over the exposed end of spindle-bar and over the two spacers just fitted.
- Mark the spindle bar at the end of the bobbin.
- Fit the remaining washer and nut (items 6 and 7) from kit onto thread and tighten until both nuts are engaged in nylon and equal amounts protrude from either side. Do not overtighten – the nylon nuts will hold it tight.

ISSUE 1 21/04/2016 (NSY)

CONSUMER NOTICE

The catalogue description and any exhibition of samples are only broad indications of the Products and R&G may make design changes which do not diminish their performance or visual appeal and supplying them in such state shall conform to the order. The Buyer acknowledges no representation or warranty (other than as to title) has been given or will apply to the Products other than those in R&G's order or confirmation and the Buyer confirms it has chosen the Products as being of merchantable quality and suitable for its particular purposes. Where R&G fits the Products or undertakes other services it shall exercise reasonable skill and care and rectify any fault free of charge unless the workmanship has been disturbed. The Buyer is responsible for ensuring that the warranty on the motorcycle is not affected by the fitting of the Products. On return of any defective Products R&G shall at its option either supply a replacement or refund the purchase money but shall not be liable if the Products have been modified or used or maintained otherwise than in accordance with R&G's or manufacturer's instructions and good engineering practice or if the defect arises from accident or neglect. Other than identified above and subject to R&G not limiting its liability for causing death and personal injury, it shall not be liable for indirect or consequential loss and otherwise its liability shall be limited to the amounts paid by the Buyer for the Products or the fitting or service concerned. These terms do not affect the Buyer's statutory rights.

R&G RACING RETURNS POLICY (NON-FAULTY GOODS)

Returns must be pre-authorised (if not pre-authorised the return will be rejected). Goods may only be returned direct to us if they were purchased direct from us (customer must prove if necessary). Otherwise to be returned to original vendor. Goods must be in re-sellable condition, in the opinion of R&G Racing. All returns are subject to a 25% restocking and handling fee (25% of the gross value exc. P&P – at the prevailing price at time of purchase). The customer must pay any and all carriage charges. No returns of discontinued products, unless within 14 days of purchase. This policy does not affect your statutory rights and does not refer to faulty goods.



FP0186

**NOTICE DE MONTAGE POUR FP0186 PROTECTIONS FOURCHE
HUSQVARNA 701 ENDURO 2016-**

Page | 4



LES PHOTOS CI-DESSUS NE SONT QUE REPRESENTATIVES

Le kit contient les articles exposés ci-dessous, vérifier que toutes les pièces soient présentes avant de procéder au montage.

LA FAÇON DONT LE KIT EST EMBALLE NE CORRESPOND PAS FORCEMENT A LA FAÇON DE MONTER LES PIECES SUR LA MOTO.

Notez que si les kits sont emballés avec un tube en plastic qui sépare les composants sur l'axe, ce tube doit être jeté).

LES PARTIES PRESENTEES PEUVENT ETRE UNIQUEMENT REPRESENTATIVES (POUR LA CLARTE DES INSTRUCTIONS UNIQUEMENT)

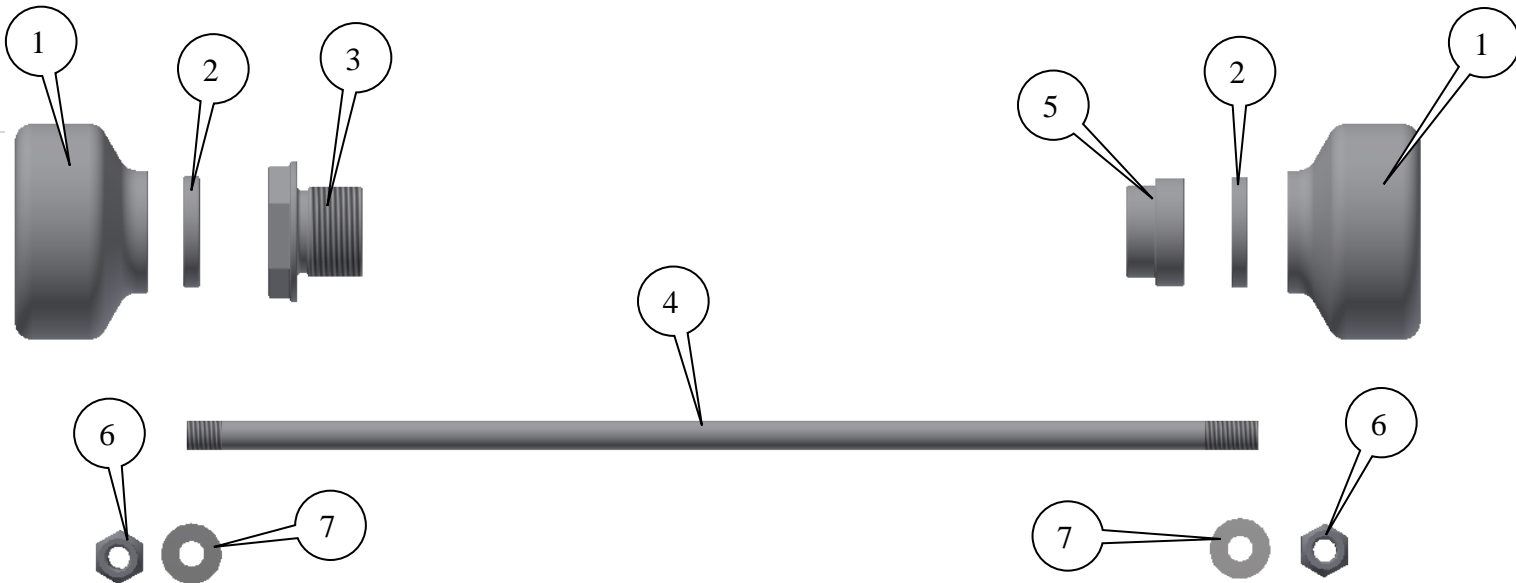
Notice disponible au téléchargement sur www.rg-racing.com

COUPLES DE SERRAGE RECOMMANDES

M4 BOULON = 8Nm
M5 BOULON = 12Nm
M6 BOULON = 15Nm
M8 BOULON = 20Nm
M10 BOULON = 40Nm



FP0186



LEGENDE

- ARTICLE 1 = PROTECTIONS CRASH (GAUCHE ET DROITE) (B0461/CS304) (x2).
ARTICLE 2 = ENTRETOISES (GAUCHE ET DROITE) (S0547 – 4.5mm WIDE) (x2).
ARTICLE 3 = ECROU D'AXE (GAUCHE) (H0004) (x1).
ARTICLE 4 = ECROU D'AXE (SB0008 – 297.5mm DE LONG) (x1).
ARTICLE 5 = ENTRETOISE (DROITE) (S0494 – 16mm DE LARGE) (x2).
ARTICLE 6 = M8 ECROUS (x2).
ARTICLE 7 = M8 RONDELLES (x2).

OUTILS REQUIS

- Clé à cliquet 1x 10mm, 2x 13mm et 1x 27mm.

NOTICE DE MONTAGE

- Enlever l'écrou d'axe d'origine en utilisant une clé à cliquet 27mm.
- Utiliser une clé 10mm pour enlever le joint anti poussière en plastique installé dans l'axe.
- Desserrer les 2 boulons d'axe indiqués ci-dessous du côté droit puis enlever l'écrou.



R&G Racing

Unit 1, Shelley's Lane, East Worldham, Alton, Hampshire, GU34 3AQ
Tel: +44 (0)1420 89007 Fax: +44 (0)1420 87301 www.rg-racing.com Email: info@rg-racing.com



- Remplacer l'écrou d'axe par un nouvel écrou (article 3) fourni dans le kit puis serrer aux couples de serrage recommandés.
- Insérer un écrou et une rondelle (articles 6 et 7) sur l'axe (article 4) (l'extrémité avec le filetage le plus court, et veiller à ce que l'écrou soit complètement engagé.
- Passer l'axe avec écrou et rondelle dans la protection crash (article 1), puis dans une des entretoises fines (article 2) puis dans l'écrou d'axe tout juste inséré de façon à ce que l'alésage de la protection crash se place sur la tête de l'écrou.
- Placer l'entretoise large (article 5) sur l'extrémité droite de l'axe de façon à ce qu'elle se place dans l'alésage.
- Placer l'entretoise fine restante (article 2) sur l'extrémité droite de l'axe de façon à ce qu'elle se place contre l'entretoise tout juste insérée.
- Placer la protection crash restante (article 1) sur l'extrémité de l'axe et sur les 2 entretoises tout juste insérées.
- Marquer l'axe à l'extrémité de la bobine.
- Insérer la rondelle restante et l'écrou (articles 6 et 7) du kit sur le filetage et serrer jusqu'à ce que les 2 écrous soient engagés dans le nylon et que les longueurs dépassantes de chaque côté soient identiques.
- **NE PAS TROP SERRER – Les écrous bloquent suffisamment.**

ISSUE 1 21/04/2016 (NSY)

CONSUMER NOTICE

The catalogue description and any exhibition of samples are only broad indications of the Products and R&G may make design changes which do not diminish their performance or visual appeal and supplying them in such state shall conform to the order. The Buyer acknowledges no representation or warranty (other than as to title) has been given or will apply to the Products other than those in R&G's order or confirmation and the Buyer confirms it has chosen the Products as being of merchantable quality and suitable for its particular purposes. Where R&G fits the Products or undertakes other services it shall exercise reasonable skill and care and rectify any fault free of charge unless the workmanship has been disturbed. The Buyer is responsible for ensuring that the warranty on the motorcycle is not affected by the fitting of the Products. On return of any defective Products R&G shall at its option either supply a replacement or refund the purchase money but shall not be liable if the Products have been modified or used or maintained otherwise than in accordance with R&G's or manufacturer's instructions and good engineering practice or if the defect arises from accident or neglect. Other than identified above and subject to R&G not limiting its liability for causing death and personal injury, it shall not be liable for indirect or consequential loss and otherwise its liability shall be limited to the amounts paid by the Buyer for the Products or the fitting or service concerned. These terms do not affect the Buyer's statutory rights.

R&G RACING RETURNS POLICY (NON-FAULTY GOODS)

Returns must be pre-authorized (if not pre-authorized the return will be rejected). Goods may only be returned direct to us if they were purchased direct from us (customer must prove if necessary). Otherwise to be returned to original vendor. Goods must be in re-sellable condition, in the opinion of R&G Racing. All returns are subject to a 25% restocking and handling fee (25% of the gross value exc. P&P – at the prevailing price at time of purchase). The customer must pay any and all carriage charges. No returns of discontinued products, unless within 14 days of purchase. This policy does not affect your statutory rights and does not refer to faulty goods.

R&G Racing

Unit 1, Shelley's Lane, East Worldham, Alton, Hampshire, GU34 3AQ

Tel: +44 (0)1420 89007 Fax: +44 (0)1420 87301 www.rg-racing.com Email: info@rg-racing.com